

BRACING SCHEDULE _ DIRECTION A						
Brace Type	Mark	Capacity kN/m	Length (m)	Resistance kN	Bottom Plate Fixing	Top Plate Fixing Q'ty & Connection Type
SINGLE STRAP 60x0.75 G550	A1		2.0	6.1	HD4 with 3/12g Screws	2 / PT1
SINGLE STRAP 60x0.75 G550	A2		2.6	7.1	HD4 with 3/12g Screws	2 / PT1
SINGLE STRAP 60x0.75 G550	A3		3.0	7.6	HD4 with 3/12g Screws	2 / PT1
SINGLE STRAP 60x0.75 G550	A4		3.0	7.6	HD4 with 3/12g Screws	2 / PT1
SINGLE STRAP 60x0.75 G550	A5		2.0	6.1	HD4 with 3/12g Screws	2 / PT1
SINGLE STRAP 60x0.75 G550	A6		1.7	5.4	HD4 with 3/12g Screws	2 / PT1
SINGLE STRAP 60x0.75 G550	A7		1.8	5.7	HD4 with 3/12g Screws	2 / PT1
SINGLE STRAP 60x0.75 G550	A8		1.5	4.9	HD4 with 3/12g Screws	2 / PT1
POWERTRUSS	A9	0.45	9.7	9.7	AS DETAILED - D02	3/14g TEK SCREWS
POWERTRUSS	A10	0.6	12.8	12.8	AS DETAILED - D02	3/14g TEK SCREWS
POWERTRUSS	A11	0.6	12.8	12.8	AS DETAILED - D02	3/14g TEK SCREWS
POWERTRUSS	A12	0.6	12.8	12.8	AS DETAILED - D02	3/14g TEK SCREWS
POWERTRUSS	A13	0.45	9.7	9.7	AS DETAILED - D02	3/14g TEK SCREWS
TOTAL RESISTANCE _ DIRECTION A				108.3	When more Than One Connector Is Specified Provide One Each End Of Panel And Distribute The Remainder Evenly	

BRACING SCHEDULE _ DIRECTION B						
Brace Type	Mark	Capacity kN/m	Length (m)	Resistance kN	Bottom Plate Fixing	Top Plate Fixing Q'ty & Connection Type
SINGLE STRAP 60x0.75 G550	B1		3.0	7.6	HD4 with 3/12g Screws	AS PER TRUSS SPECIFICATION
SINGLE STRAP 60x0.75 G550	B2		2.3	6.5	HD4 with 3/12g Screws	AS PER TRUSS SPECIFICATION
SINGLE STRAP 60x0.75 G550	B3		2.3	6.5	HD4 with 3/12g Screws	AS PER TRUSS SPECIFICATION
SINGLE STRAP 60x0.75 G550	B4		3.0	7.6	HD4 with 3/12g Screws	AS PER TRUSS SPECIFICATION
SINGLE STRAP 60x0.75 G550	B5		3.0	7.6	HD4 with 3/12g Screws	AS PER TRUSS SPECIFICATION
SINGLE STRAP 60x0.75 G550	B6		2.4	6.6	HD4 with 3/12g Screws	AS PER TRUSS SPECIFICATION
TOTAL RESISTANCE _ DIRECTION B				42.4	When more Than One Connector Is Specified Provide One Each End Of Panel And Distribute The Remainder Evenly	

NOTE SUITABLE BRACE TYPES:

- SINGLE STRAP 60x0.75 G550 WITH 6 x M6 EACH END
- DOUBLE STRAP 30x1.0 G300 WITH 3 x M6 EACH END

REFER TO DETAIL SHEETS FOR TIE DOWN TYPE DETAIL

*STRAP BRACING
ADD THESE*

DIRECTION A

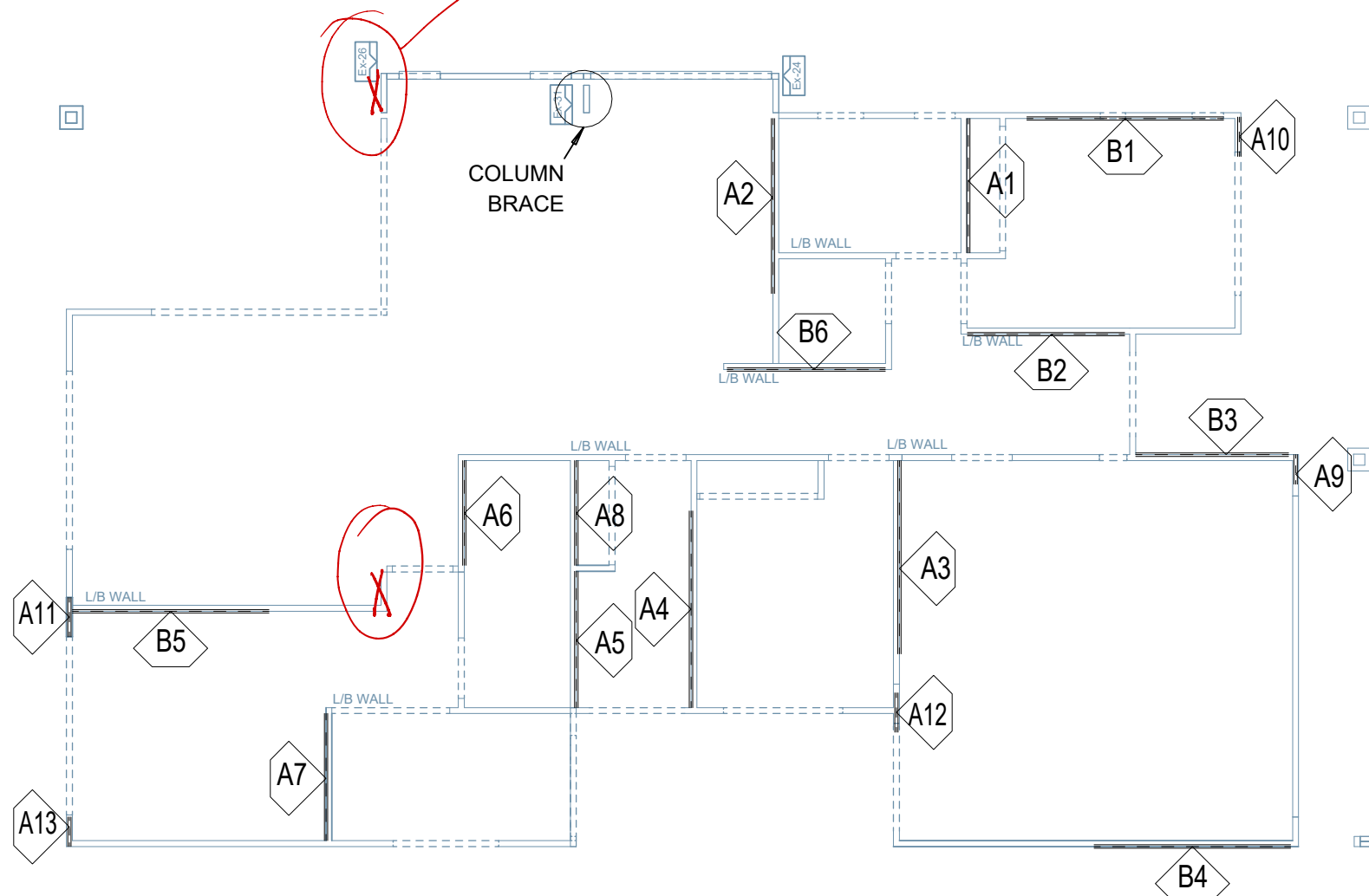


96.0 kN
REQ'D

DIRECTION B



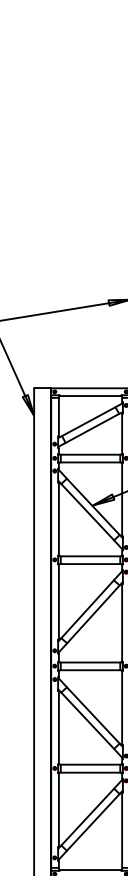
40.0 kN
REQ'D



NB

- 1) ALL TRUSSES SHALL BE FIXED TO TOP PLATES OF LOADBEARING WALLS IN ACCORDANCE WITH TRUSS SPECIFICATIONS.
- 2) NOMINAL FIXINGS TO ALL INTERNAL AND EXTERNAL NON LOAD BEARING & NON BRACING WALLS SHALL BE RESTRAINED Laterally AT THEIR TOPS IN ACCORDANCE WITH NOMINAL FIXING DETAILS
- 3) CEILING JOISTS FIXED TO TOP PLATES OF LOADBEARING WALLS IN ACCORDANCE WITH THE TRUSS SPECIFICATIONS

89x5.0 SHS
BP1 TO SLAB



TRUSS FRAME
SCREW TO COLUMNS
AT 500 CTS WITH
12g SERIES 500 TEKS

COLUMN
BRACE